



# ISDA NEWS

## President's Report

*Working Hard to Advance Iowa's Dairy Industry*



**Lee Maassen**  
ISDA Board President

Welcome to all dairy farmers of Iowa. It's hard to imagine that we are in May already. Spring is upon us, and it is a busy time of year for planting. Hope all is going well and best wishes in those endeavors.

Your ISDA staff has been busy this 2024 year, working on behalf of us as dairy farmers and the dairy industry. Our legislatures have convened for the year. ISDA had a great impact on a few of the issues with which we lobbied. Thanks to the staff, including Mariah and Jill, for representing us well.

One great win was the *Capital Gains Exclusion Bill* that passed. This bill

returns to the policy of having only 50% capital gains on our dairy cows that are sold after two years of life on the farm. That's a great dollar saver for every dairy farmer on his tax structure.

We tried very hard to get a milk labeling amendment attached to the *Meat Labeling Bill* but could not get it done this year. We will continue the fight next year and maybe by then the FDA will make strides on the federal end of that issue.

It was a great day at the Capital on Dairy Day this year meeting with our legislature and letting them know our concerns and issues. I think they got the message of the importance of dairy for Iowa! We had a great time at the wine and cheese social in the evening having discussions with our representatives. Thanks to the *Iowa Wine Growers Association* and to the dairy

*continued on page 2 →*

## IN THIS ISSUE...

- 1 President's Report
- 3 Executive Director's Report
- 4 USDA Avian Influenza Info
- 6 Hinterland Dairy Expansion
- 7 WIDA Spring Open House
- 9 Iowa's Dairy Center News
- 10 Choose Iowa Dairy Grants
- 12 Agri-Plastics Product News
- 16 Keeling Leadership Award
- 16 AMPI Wins Award
- 17 Scholarship Awards
- 19 ISU Extension News



# Board of Directors and Officers

## President

Lee Maassen

## Vice President

Robert Horst

## Secretary

Christina Zuiderveen

## Treasurer

Doug Carroll

## Board Members

Deb Wehde

Darren Davelaar

Jeff Schmitt

Tom Tegeler

Chris Garris

Mark Hamlett

Dale Humpal

Gary Kregel

Brian Lantzky

Dennis Mashek

Anthony Nunes

Peggy Sparrgrove

## Officio Members

Dr. Jason Ross

Secretary Mike Naig

Dr. Ruth MacDonald

Dr. Daniel Robison

## Iowa State Dairy Association

101 NE Trilein Dr.  
Ankeny, IA 50021  
iowadairy.org

### Mariah Busta

Executive Director  
mariahbusta@iowadairy.org  
Mobile: (563) 449-2414

### Amie Bill

Associate Director  
amiebill@iowadairy.org  
Mobile: (319) 252-8175

## President's Report (cont.)

“ISDA had a great impact on a few of the issues with which we lobbied. Thanks to the staff, including Mariah and Jill, for representing us well.”

processors of Iowa for the wine, cheese and the milk. Thanks to the on-farm processing families for helping with this event as well. It is a great success story, and we will continue to build on it again next year.

As many of you know, there were 20 grants awarded for the *Dairy Innovation Bill*. This bill was passed in 2023 totaling \$750,000 in funding. It's a great start and I hope we can build on that. Best wishes to all those that received a grant and may it help to make the dairy industry more vibrant and sustainable in the future. Thanks to IDALS and our Secretary of Agriculture, Mike Naig, for coordinating the efforts to bring this bill together for dairy families. We had over three times the application in dollar amounts than what we could award. That tells you something about the energy and vitality of our dairy farms to be here in the future and grow our industry.

I am so thankful for our staff, our board members and producers that have been a part of the making of history with the *Highly Pathogenic Avian Influenza* (HPAI) now becoming a part of our management decisions. It's something I wish we didn't have to address but it is here and hopefully we can do our best in working through the protocols. Thanks to all those who have shared input and concerns as they affect your business and long-

term decisions. Several items have been modified and the state leaders have listened to our dairy farmers' concerns as we navigate this new virus. Please do not hesitate to reach out to either myself or the staff here at ISDA if we can be of assistance to you in any way as we work through HPAI. We have a voice, and we need to let policymakers know what is best for us as dairymen, our industry, and our consumers. It is a big task today but with all your help, we can unite as a unified voice for dairy in both the state and nationally as well!

In closing, I just want to say it has been a very busy season for our staff. Thanks to Mariah for all she has done and to Amie for assisting her. Thanks to Jill for lobbying for ISDA this past year and to all the board members for your input. To every dairy farmer out there, thanks for all you do each day in being a part of this great dairy industry in Iowa. It's not only our business and livelihood but is a part of who we are. You can be proud to be an Iowa Dairy farmer for today and tomorrow. I am hopeful ISDA is the voice to be heard for dairy farmers in Iowa!

Yours truly,



Lee Maassen  
ISDA President



# Executive Director's Report

## Key Legislative Wins Help Position Iowa's Dairy Industry for the Future



In the first half of 2024, ISDA has celebrated several wins for Iowa's dairy industry. With the conclusion

of the Iowa General Assembly at the end of April, ISDA is pleased the Dairy Innovation Program will continue to provide dairy farmers with funding to implement labor reducing technologies and on-farm processing. In its first year, the program funded 20 projects for Iowa dairy farmers and processors, which were announced in April. The grant program was competitive as there were 50 applicants requesting \$2.7 million in funding. The strong numbers demonstrate the need for Iowa to invest in and support Iowa's dairy industry. Applications for the 2025 grant program will be available at the end of the year. Additionally, in the final days of session, the chambers passed HF 2649, a bill that reinstates the livestock capital gains deduction for breeding livestock retroactive to tax year 2023. Other bills of interest for ISDA included meat labeling, agriculture education and foreign agriculture land ownership.

ISDA once again hosted the annual Dairy Day at the Capitol event where our members met with both House and Senate leadership to share an update on Iowa's dairy industry. We had great conversations and formed some solid relationships that lay the foundation to address future priorities. Later that evening, ISDA partnered with the Iowa Wine Growers Association to host an Iowa Wine & Cheese social. We showcased

**“...we continue to pay attention to advancements with the Farm Bill, Federal Milk Marketing Orders, and other items as it relates to dairy farmers. At the end of 2023, the Whole Milk for Healthy Kids Act passed the House with overwhelming bipartisan support. If enacted, this bill will allow whole milk back in schools.”**

Iowa dairy though a large charcuterie spread featuring Iowa cheeses, paired with Iowa wines. The event was well attended and there, members were able to interact with legislators on a more casual basis.

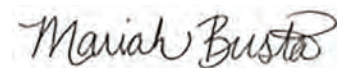
Federally, we continue to pay attention to advancements with the Farm Bill, Federal Milk Marketing Orders, and other items as it relates to dairy farmers. At the end of 2023, the Whole Milk for Healthy Kids Act passed the House with overwhelming bipartisan support. If enacted, this bill will allow whole milk back in schools. As it makes its way to the Senate, we're proud that all of members of Iowa's delegation have signed on as a co-sponsor of the bill.

Another win for Iowa's dairy industry is the announcement of the new Daisy plant that will be coming to Boone. This is a great opportunity to expand Iowa's milk market and provide consumers with even more access to dairy products made right here in Iowa. According to Iowa State University, the impact of a single dairy cow in Iowa is \$25,495.

Opportunities for growth of Iowa's dairy industry are not only good for dairy farmers, but Iowa's economy.

Finally, ISDA continues to remain vigilant on the highly pathogenic avian influenza situation happening in the dairy industry. We have been in close contact with the Iowa Department of Agriculture, the Iowa State Veterinarian and other industry stakeholders to share information and discuss the impacts HPAI has on Iowa's dairy industry. For the latest information, visit the USDA APHIS website.

As always, ISDA encourages you as dairy farmers to talk to your local legislators and help them understand the dairy industry and the issues you face on your farm. On behalf of ISDA, thank you for your membership and support. Have a happy June Dairy Month!



*Mariah Busta, Executive Director  
Iowa State Dairy Association*



## USDA Support for Producers with Affected Dairy Premises



On April 24, USDA announced a [Federal Order](#) effective as of April 29, as part of its ongoing efforts to protect the U.S. livestock industry from the threat posed by highly pathogenic avian influenza (HPAI or H5N1) in dairy cattle. The Federal Order (FO) requires mandatory testing prior to the interstate movement of lactating dairy cattle and mandatory reporting of positive influenza A test results in livestock. USDA is taking these actions to address any risks to animal health, public health, and the safety of our food supply. To help producers enhance their biosecurity practices, USDA is offering additional support for producers who have HPAI confirmed positive dairy herds so they have tools to eliminate the virus and can protect their animals, themselves, their families, and their employees.

### Eligibility

Dairy producers with premises that have been confirmed positive for HPAI are eligible for USDA support to conduct activities that best fit their operations. Support for these interventions is available for a period of up to 120 days from the date of confirmation of H5N1 in cattle on the affected premises.

### Enrollment and Verification

Interested producers will contact the [Area Veterinarian in Charge](#) to enroll.

Producers will work with USDA personnel to develop a plan for their premises—detailing planned testing and movement, biosecurity practices and other planned activities. Following the development of this plan, the producer will draft a Detailed Financial Plan (DFP) to include all the planned activities, purchases and services associated with the actions they select (from the list below) that will be eligible for USDA financial support.

In order to assure fiscal accountability with federal funds, USDA personnel—a Field Reimbursement Specialist or their designee—will conduct a review every 30 days to monitor the progress in implementing the components of the action(s) which they have chosen to implement (e.g., is PPE being used appropriately, is the enhanced biosecurity plan being implemented).

The producer will be provided with information to sign up for a System for Award Management (SAM) registration, which will provide for the mechanism of payment or offered an alternative method of payment (e.g., providing an EFT form for direct deposit payments, requesting a paper check be drafted), although these other options will result in less timely payments compared to SAM.

### Payments

Every 30 days, the producers will be provided a form (VS 1-23) to review and sign verifying the costs associated with actions below per mechanism established above.

*continued on page 5 →*

## Actions

**Protect against the potential for disease spread between humans and animals.** USDA will provide financial support for producers with affected herds who supply PPE to employees and/or provide outerwear uniform laundering and facilitate the participation of their workers in a USDA/CDC workplace and farmworker study.

- A flat rate per employee will be offered to producers who elect this option, up to \$2,000 per affected premises per month.
- Producers will need to provide proof of purchase of PPE or the cost of laundering services as well as acknowledgement from CDC of their participation in the study.

**Support producers in biosecurity planning and implementation.** USDA will provide support to develop biosecurity plans based on existing secure milk supply plans. This includes recommended enhanced biosecurity for individuals that frequently move between dairy premises—milk haulers, veterinarians, feed trucks, AI technicians, etc.

- Producers can elect to hire private entities to develop site specific plans, conduct biosecurity trainings, and perform audits.
  - Producers would be compensated up to \$1,500 per affected premises for these services after verification and inclusion on the DFP.
- Producers could elect to work with State personnel who would develop site specific plans, conduct biosecurity trainings, and perform audits.
  - States would be compensated under a cooperative agreement based on the flat rates for activities chosen by the producer.
- USDA will provide a \$100 payment to producers who purchase and install an in-line sampler for their milk system on an affected premises.

**Provide funding for heat treatment to dispose of milk from sick cows in a bio secure fashion.** This will provide producers a safe option to dispose of their milk from sick cows. Heat treatment performed in accordance with standards set by FDA is the only currently available method considered to effectively inactivate the virus in milk from sick cows.

- If a producer establishes a system to heat treat all waste milk from sick cows before disposal, USDA will pay the producer up to \$2,000 per month, up to \$8,000 total, per affected premises.

**Reimburse producers for veterinarian costs associated with confirmed positive HPAI premises.** USDA will provide support to producers to cover veterinary costs necessarily incurred for treating cattle infected with HPAI, as well as fees for veterinarians to collect samples for testing.

- This can include veterinary fees and/or specific supplies needed for treatment and sample collection.
- Veterinary costs are eligible for reimbursement from the initial date of positive confirmation at NVSL for that premises, up to \$10,000 per premises.

**Offset shipping costs for influenza A testing at laboratories in the National Animal Health Laboratory Network.** USDA will pay for the cost for of shipping samples to NAHLN labs for testing.

- USDA will pay actual shipping costs, not to exceed \$50 per shipment for up to 2 shipments per month for each affected premises.



Animal and Plant Health Inspection Service  
U.S. DEPARTMENT OF AGRICULTURE



BRING YOUR FAMILY TO THE ANNUAL

## BREAKFAST ON THE FARM

**The Northeast Iowa Dairy & Agriculture Foundation proudly supports dairy farmers.**

Celebrate National Dairy month and enjoy a wholesome breakfast with delicious dairy products. Discover Iowa's Dairy Center with guided tram tours of the farm, inflatables, corn pools, educational booths and more! You won't want to miss the fun!

**June 22**  
**8 am - Noon**

**Iowa's Dairy Center**  
1527 Hwy. 150 S., Calmar



**NORTHEAST IOWA**  
**COMMUNITY COLLEGE**



**NORTHEAST IOWA**  
**DAIRY & AGRICULTURE**  
**FOUNDATION**

► [iowadairycenter.com](http://iowadairycenter.com) ► [nicc.edu/agscience](http://nicc.edu/agscience)

Follow Us. @iowadairycenter



## Award-winning SE Iowa Dairy Expands Business

Hinterland Dairy in Donnellson, Iowa, began making cheese in July 2019. Ralph and Colleen Krogmeier, along with their daughter, Shannon Wellman, introduced the value added business to their current dairy to bring products directly from their farm to the consumer.

Currently, products available include fresh cheese curds, quark, and a variety of cheddar cheeses. All the products are marketed directly through their on farm store, as well as farmers markets and to local retailers and restaurants. In 2021, their Quark took first place in the cultured division at the Iowa State Fair, and in 2023 their fresh cheddar cheese curds earned Best of Show. The farm has also been recognized as one of the 2023 Iowa Farm Environmental Leader award winners.

Hinterland Dairy recently upgraded their processing equipment to produce a higher-quality product with added efficiencies. A larger cheese vat was added, as well as a



From left: Shannon Wellman, Ralph Krogmeier and Colleen Krogmeier.

HTST pasteurizer to replace the previous vat pasteurizer. Production was halted in January and February to allow for the upgrades to be installed and tested before cheese production began again at the end of February.

The Krogmeier Family is active in the

local community, donating to and supporting many local groups and fundraisers. They also host many 4-H, FFA, school and community group tours. They enjoy promoting their own products, as well as all dairy products, and educating consumers on dairy farming.

## 2023 YEAR-END FACTS FROM THE ISU CREAMERY

- ✓ 2,415 people given a tour of ISU Creamery
- ✓ Reached 53,500 people on social media
- ✓ Scooped 27,787 scoops

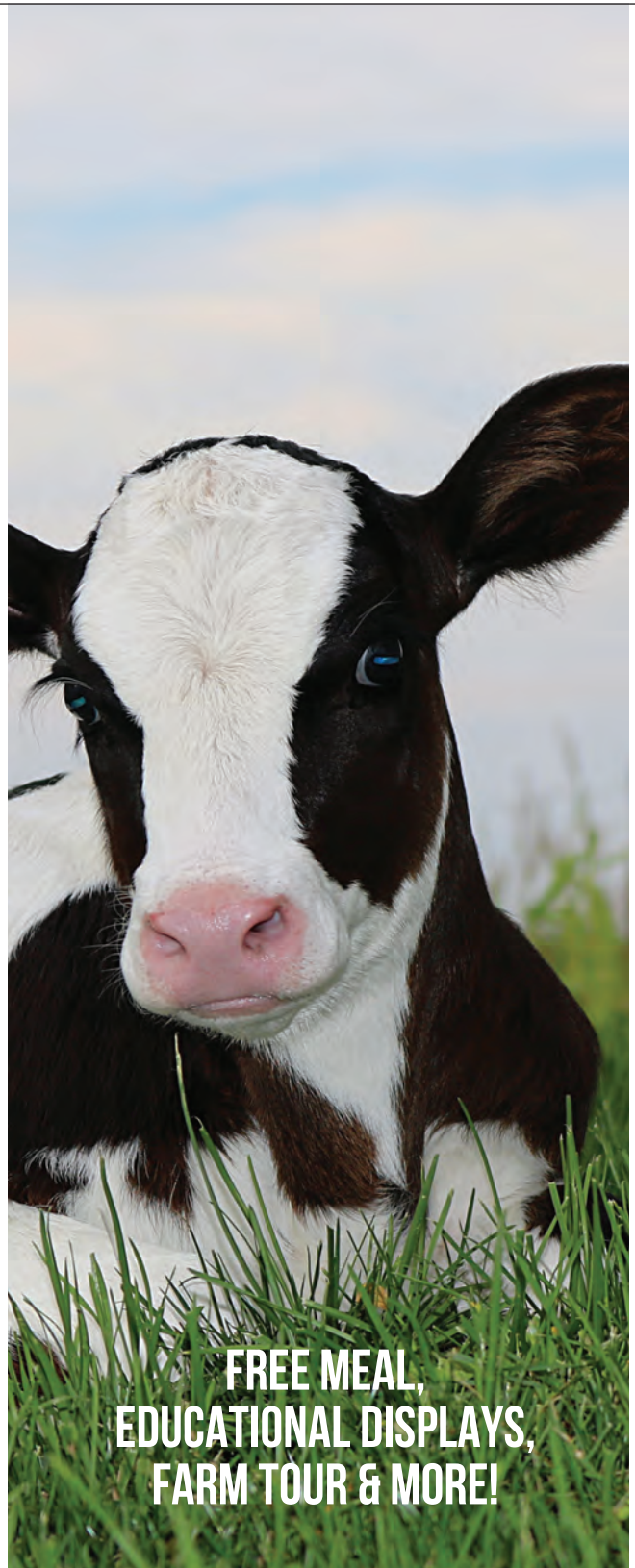




Western Iowa Dairy Alliance invites you to the

# OPEN HOUSE AT ROORDA DAIRY #2

4253 Oriole Ave  
Granville, IA  
Wednesday, June 12  
4-8 p.m.



**FREE MEAL,  
EDUCATIONAL DISPLAYS,  
FARM TOUR & MORE!**

**FOR MORE INFORMATION:**

Follow us at:

@westerniowadairyalliance

or go to:

[www.westerniowadairyalliance.com](http://www.westerniowadairyalliance.com)







# TODAY IS YOUR OPPORTUNITY **BUILD THE TOMORROW YOU WANT.**

At Trans Ova Genetics, we're empowering breeders to build a tomorrow that exceeds expectations. We provide the complete toolbox of services you need to create a legacy of excellence. Today's choices shape tomorrow's success. Choose Trans Ova Genetics and leave a lasting legacy for the next generation.

For a full list of locations, visit [www.transova.com](http://www.transova.com)

**TRANS**   
**genetics**

EMBRYO TRANSFER • IN VITRO FERTILIZATION • SEXED SEMEN  
DONOR HOUSING • RECIPIENT OPTIONS • GENETIC PRESERVATION • CLONING



# Enhancements Coming Soon to Iowa's Dairy Center

Spring is in full bloom and marks the start of the busy season at Iowa's Dairy Center. We are excited for the next few months ahead. To kick off spring, we have been busy welcoming schools back to the farm for Iowa's Dairy Story. This program is held in partnership with Iowa State University Extension & Outreach and is designed to help youth understand the importance of dairy farming and dairy products. Students enjoy a fun-filled day learning about dairy nutrition, breeds, history and the cow digestive system. To end the day, they go on a tour around the farm and make homemade ice cream. This year, we will welcome over 900 students from 17 Northeast Iowa schools.

The warmer weather also means planning is underway for Breakfast on the Farm. We invite you to join us for our 14th annual Breakfast on the Farm event on Saturday, June 22nd from 8:00 a.m. to noon at Iowa's Dairy Center in Calmar, Iowa. We will be serving a wholesome breakfast of Dad's Belgian Waffles served with real butter and whipped cream, sausage, ham, yogurt, cheese and ice cream. In addition to breakfast, visitors will enjoy activities including guided tram tours of Iowa's Dairy Center, petting zoo, inflatables, corn pools, educational booths and more. Breakfast on the farm will be held rain or shine and parking is available on-site. Be sure to watch our Facebook page for updates. We hope to see you there!

We have been working on two big projects to update spaces at Iowa's Dairy Center. First, we are developing interpretive signage for



our Iowa's Dairy Museum. These panels will replace the current photo collage boards to tell the story of Iowa's rich dairy history. There will be 13 acrylic panels that will be installed above our museum display cases. We are also reimagining one of our large classrooms by adding floor-to-ceiling wall graphics to tell the story of dairy and agriculture. Our classroom theme is corn, cows

and conservation. We are grateful for all of our sponsors who helped make these projects possible. Stay tuned for updates on these projects. We look forward to sharing them with you!

We are looking forward to an exciting and busy summer. We encourage you to subscribe to our monthly e-newsletter for the latest events and happenings at Iowa's Dairy Center. To sign up for the Dairy Center Connection, please visit [www.iowadairycenter.com](http://www.iowadairycenter.com). Also, be sure to follow us on Facebook and Instagram. From all of us at the Northeast Iowa Dairy and Agriculture Foundation, we wish you a safe and prosperous growing season!

**FARM FIRST**  
DAIRY COOPERATIVE

**Serving Dairy Farmers Across the Midwest**

*Policy Advocacy*      *Milk Income Loss Benefits*      *Test Verification*      *Investing in Youth*

Learn more at [www.FarmFirstDairyCooperative.com](http://www.FarmFirstDairyCooperative.com)

# Iowa Secretary of Ag Mike Naig Announces Choose Iowa Dairy Innovation Grants

*Grants will increase on-farm dairy processing and labor saving technology*



Mike Naig

Iowa Secretary of Agriculture Mike Naig recently announced that 20 Iowa dairies across 12 counties have

been awarded Choose Iowa Dairy Innovation Grants to increase on-farm dairy processing, incorporate labor saving technology, and expand the availability of Iowa dairy products for consumers to enjoy.

The announcement was made at

Picket Fence Creamery outside of Woodward, which was awarded a grant to significantly expand their on-farm processing capacity.

“Choose Iowa is about connecting consumers to the great Iowa products that are grown, raised and made here in Iowa. The Choose Iowa Dairy Innovation Grant Program helps Iowa dairy farms cost-share the addition of new on-farm processing equipment or labor-saving technology, both of which will ultimately lead to more Iowa dairy products for consumers to enjoy,” said Secretary Naig. “This

grant was exceptionally competitive with requests far exceeding available funding, so we know these are great projects which will have a positive impact on these farms and the Iowa dairy industry as a whole.”

“Iowa State Dairy Association (ISDA) is excited for the announcement of the Dairy Innovation Grant awards. This is an initiative ISDA worked hard for and are pleased to see it come to fruition with the Iowa Department of Agriculture and Land Stewardship,” said Lee Maassen, President of ISDA and a 5th generation dairy farmer from Maurice. “The grant program will support Iowa’s dairy farms by addressing the need for innovation — whether through dairy processing or implementing labor-reducing technologies on the farm — plus, give Iowa consumers additional options to support local dairy. We appreciate Iowa’s investment in our dairy industry.”

The cost-share grants are helping dairies invest in pasteurization equipment, processing space, packaging and bottling products, robots, health monitoring, automated feeding systems, cleaning assistance, and much more.

The program funds are not eligible to cover start-up costs, advertising, public relations, salary/benefits/wages, existing debt or any expenses incurred prior to awarding the grant.

With the legislative intent of assisting smaller dairies and farmers, grant awardees must be located in Iowa, have fewer than 50 employees, and

*continued on page 11 →*

**H&S**  
Since 1967

**NEW PRODUCT**  
**NEW PS6180 POWER SPREAD MANURE SPREADER**

- 3/4" thick vertical beater flighting
- Monobloc gearbox with large 3 1/8" output shafts
- 3/4" marine log chain apron featuring a limited lifetime warranty with heavy tubular slats
- Dual apron drive gearboxes
- Rubber tongue suspension



    **FIND A DEALER**  
hsmfgco.com/dealer

 **WWW.HSMFGCO.COM**

 **715-387-3414**



Continued from Page 10

be in good standing with pertinent regulatory agencies. Only dairies permitted and inspected by the Iowa Department of Agriculture and Land Stewardship were eligible. The concept builds off the success of other recent Iowa cost-share grant programs, including the Choose Iowa Value-Added Grant and the Butchery Innovation and Revitalization Program, both of which are also aimed at increasing the availability of local food and boosting local processing capacity

The program matches up to \$100,000 per project. The overall budget is \$750,000 and grant requests far exceeded the availability funding. Eligible grant requests totaling \$2,670,191.50 were received from 50 dairies. This included 7 dairies seeking \$348,637.36 for on-farm processing and 44 dairies seeking \$2,321,554.16 for labor saving technology (one dairy requested funding for both on-farm processing and also labor-reducing technology projects).

These 20 grants will leverage an overall investment of \$2,211,000.24. Of that, \$143,509 in grant funding leverages a total investment of \$290,808.72 in on-farm processing projects. Additionally, \$600,503.14 in grants for labor reducing technology leverages a total investment of \$1,920,191.52.



# Choose Iowa Dairy Innovation Grant Recipients

## ■ On-Farm Processing

**Cinnamon Ridge | Donahue | \$6,023.30**  
*Utilize a Clean Out of Place unit to sanitize cheese making equipment more efficiently.*  
**Total Project Budget: \$12,046.60**

**Country View Dairy | Hawkeye | \$6,750**  
*Introduce conveyor belt and rotary packoff turntable to more efficiently package products.*  
**Total Project Budget: \$13,500**

**Hightail | Plainfield | \$19,485.78**  
*Build on-site space for processing milk for bottling and cheese curds.*  
**Total Project Budget: \$41,312.12**

**Picket Fence Creamery | Woodward | \$100,000**  
*Replace vat pasteurizer with HTST (high temperature short time) pasteurizer and chiller.*  
**Total Project Budget: \$201,450**

**WW Homestead Dairy | Waukon | \$11,250**  
*Purchase new cheese curd mill to expand their frozen breaded cheese curd line.*  
**Total Project Budget: \$22,500**

## ■ Labor Reducing Technology

**A&J Farms | Fort Atkinson | \$17,180.63**  
*OptiDuo Feed Pusher*  
**Total Project Budget: \$34,361.26**

**Anderegg Farms | Guttenberg | \$77,184.31**  
*Automatic Takeoffs*  
**Total Project Budget: \$154,368.61**

**Chad Fertig | Wall Lake | \$35,000**  
*Expansion of Dairy Parlor*  
**Total Project Budget: \$79,710.56**

**Enyart Dairy | Postville | \$13,337.50**  
*Juno Flex Feed Pusher*  
**Total Project Budget: \$26,675**

**Kenneth Steffen Dairy | New Vienna | \$100,000**  
*New milking parlor, milking parlor equipment, and milk room equipment*  
**Total Project Budget: \$816,450.64**

**Kruse Dairy | Dyersville | \$57,654.20**  
*CowManager ear tag based individual cow monitoring system*  
**Total Project Budget: \$115,308.40**

**Lango Dairy | Hopkinton | \$26,575**  
*Milk Taxi & Alta Cow Watch Activity System*  
**Total Project Budget: \$53,154.93**

**Lehman Dairy | Sherrill | \$22,063**  
*CowManager ear tag based individual cow monitoring system*  
**Total Project Budget: \$44,126.60**

**Nedved Family Farms | Garner | \$100,000**  
*Lely A5 Milking Robots*  
**Total Project Budget: \$342,939.52**

**Piggott Hills Farm | Waukon | \$10,490**  
*SCR Cow Health Monitoring System*  
**Total Project Budget: \$20,980**

**Prairie Star Farm | Waukon | \$42,000**  
*Lely Discovery Collectors*  
**Total Project Budget: \$85,158**

**Schulte Dairy | Norway | \$43,179**  
*Lely Discovery Collector*  
**Total Project Budget: \$77,858**

**Strief Farms | Farley | \$20,047**  
*Feed Watch & Rumination Collars*  
**Total Project Budget: \$40,094**

**Whitford Dairy | Volga | \$24,667.50**  
*SCR Health Monitoring System and Lely Juno Flex Robotic Feed Pusher*  
**Total Project Budget: \$49,335**

**Wolf Dairy | Epworth | \$11,125**  
*Farmfit Cow Health Monitoring System*  
**Total Project Budget: \$22,250**

## Revolutionize Your Feeding Operations with the Universal Grain Feeder

Agri-Plastics is excited to introduce our latest innovation in feeding the Universal Grain Feeder. This remarkable product marks a significant leap forward in providing precision, versatility, and durability for farmers seeking to optimize their grain-feeding operations. **Key features of the Universal Grain Feeder include:**

**Unparalleled Capacity:** The Universal Grain Feeder is our largest capacity feeder to date, holding an impressive 33 lbs. of grain. With this substantial capacity, farmers can reduce the frequency of refilling and focus on other critical tasks.

**Adjustable Feed Control Plate:** Precision in feeding is paramount for livestock health and growth. The Universal Grain Feeder features an adjustable feed control plate, allowing farmers to fine-tune the feed rate and ensure their animals receive the perfect grain quantity.

**Customizable Mounting Options:** The bottom bracket of the Universal Grain Feeder is designed with multiple holes, including a slotted option, enabling farmers to tailor their mounting preferences to accommodate various opening sizes and mounting scenarios. This versatility sets it apart from other feeders, providing greater convenience for farmers.

**Durable Poly Shell Construction:** The Universal Grain Feeder withstands the rigors of demanding farm environments. Its composite construction blends metal and plastic, creating a robust and long-lasting feeder that withstands the challenges of daily use. This ensures a lasting investment for farmers.

**Efficient Dimensions:** Measuring 8.75 × 25.625 × 12.5 inches, the Universal Grain Feeder offers an efficient design that maximizes capacity without sacrificing space. This compact yet spacious design is ideal for a variety of farm setups.

The Universal Grain Feeder is now available for purchase and elevates grain-feeding operations for farmers across the industry. For more information or to place an order, please visit [calfhutch.com](http://calfhutch.com) or contact us at [info@calfhutch.com](mailto:info@calfhutch.com) or **888-231-3575**.

*The VanBuuren family founded Agri-Plastics in 1995. These third-generation dairymen know first-hand the difficulties experienced on a dairy farm. They began experimenting with hutch designs to provide healthier, more comfortable environments for calves. Over the years, Agri-Plastics has listened and learned from many other producers, and they have used that knowledge to create game-changing innovations that have since become industry standards.*







**BUILT STRONGER.  
LASTS LONGER.**

Specialized equipment built stronger to execute your agricultural waste handling needs.

**Screw Separators**



**Prop Mixers**



**Chopper Pumps**



**Sludge Thickeners**

SALES > SERVICE > TRADE-INS

Ask us about our free 30-day equipment trial.

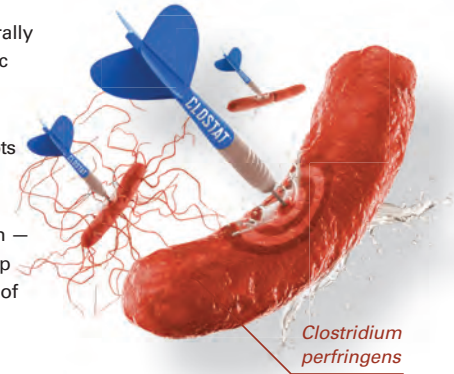
507.375.5577  
dodausa.com

255 16th Street South, St. James, MN



# TARGET PATHOGENS WITH PROBIOTIC PRECISION

CLOSTAT® is a unique, naturally occurring, patented probiotic containing *Bacillus subtilis* PB6. The PB6 in CLOSTAT effectively targets and disrupts *Clostridium perfringens* and other pathogenic bacteria. With known modes of action — and the research to back it up — CLOSTAT is the probiotic of choice to support gut health in dairy cattle.

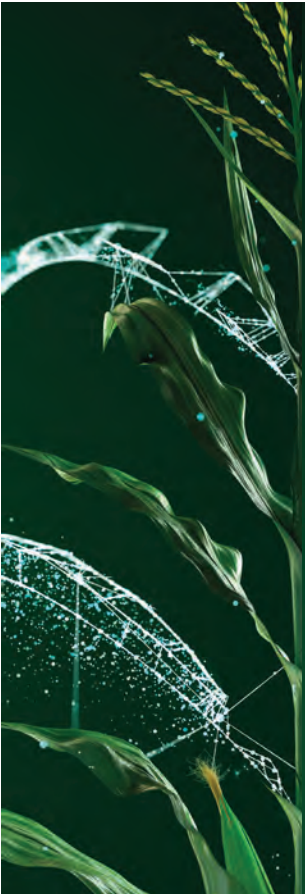


*Clostridium perfringens*

Take aim today with CLOSTAT.  
[kemin.com/clostat-dairy](http://kemin.com/clostat-dairy)



© Kemin Industries, Inc. and its group of companies 2023. All rights reserved. ®™ Trademarks of Kemin Industries, Inc., U.S.A.



# DEDICATED TO DAIRY. DAILY.

Pioneer has been dedicated to the dairy industry for over 95 years. Our complete forages package gives you unrivaled performance and a team of local experts. Contact your Pioneer sales representative to learn about our corn silage products, alfalfa varieties and inoculants.

[Pioneer.com/Forages](http://Pioneer.com/Forages)

Pioneer® brand products are provided subject to the terms and conditions of purchase which are part of the labeling and purchase documents.™ ® Trademarks of Corteva Agriscience and its affiliated companies. © 2022 Corteva. 011753 PIO (04/23)



## WANT TO SUPPORT IOWA'S DAIRY INDUSTRY?

### CORPORATE SPONSORSHIPS AVAILABLE

For information,  
please email [amiebill@iowadairy.com](mailto:amiebill@iowadairy.com)



## ISDA Processor Supporters



We are humankind

*for cattlekind.*



It's our duty to help protect this sacred bond. This is what defines us. [BornOfTheBond.com](http://BornOfTheBond.com)

All trademarks are the property of Zoetis Services LLC or a related company or a licensor unless otherwise noted. © 2021 Zoetis Services LLC. All rights reserved. GDR-00636

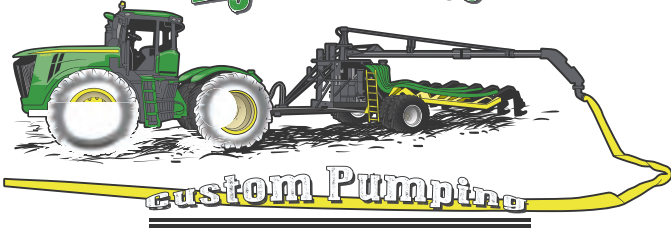


*Thank you to all Iowa State Dairy Association Supporters!*






# Jochum Agri-Service



Northwest Ag Systems Inc • Boone, Iowa • (515) 230-8982  
jochum.stephen@gmail.com • northwestagsystems.com

# AOC, LLC

Ag Odor Control, LLC

BreakSolids.com  
319.470.5727   
BREAKING SWINE & DAIRY  
SOLIDS SINCE 2010

## Profit Through Nutrition

Supreme feed processors increase ROI by enhancing feedstuff value and improving cattle performance.



THE WORLD'S BEST TMR PROCESSOR  
supremeinternational.com | 800-563-2038



# Sudbeck TRUCKING INC.

SHELDON, IOWA

Specializing in  
Livestock Gross Margin for Dairy

Insurance

*Dairy Gross Margin, LLC*

Ron Mortensen 515-570-5265  
Steve Nicklaus 515-851-0137  
Marv Carlson 712-240-8395

[www.dairygrossmargin.com](http://www.dairygrossmargin.com)

# AWS

**AUTOMATED WASTE SYSTEMS** LLC

Hull, Iowa (712) 439-2081 • (866)-918-2081  
Watertown, SD (605) 753-0300 • (844)-863-6554

[www.automatedwastesystems.com](http://www.automatedwastesystems.com)

# ISDA Recognizes Keeling Leadership Award Winners

Iowa State Dairy Association (ISDA) presented the Ralph Keeling Leadership Award to state dairy leaders at the association's annual meeting held Friday, Dec. 8 in Ames. The award is presented annually to two Iowans who have shown outstanding leadership in Iowa's dairy industry. This award is in honor of the late Ralph Keeling. Keeling operated a successful dairy farm and business, devoting much of his time and talents to progressing Iowa's dairy industry. The award was established in 1967 to recognize those individuals whose leadership efforts contribute significantly to Iowa's dairy industry.

The first recipient was Jay Hansen of Hudson who was recognized for his



innovation and leadership in on-farm processing and dairy tourism in Iowa. Jay, along with his family, own and operate Hansen's Farm Fresh Dairy, which consists of a 150-cow dairy, on-farm creamery and tour center along with two retail locations in Waterloo and Cedar Falls. Jay has served in leadership positions with the Iowa Holstien Association, DHIA and hoof trimming boards, as well as a 4-H club leader and assisted with the local FFA chapter.

The second recipient was Norman Voelker of Ryan. Norman and his family operated Apex Holsteins until it's dispersal in 2020. He was recognized for his distinguished service to the dairy industry through his involvement with ISDA, the Iowa Holstein Association, co-op and DHIA boards, and dedication to dairy youth programs in Delaware County. He continues to be involved in several dairy activities, including preparing for the multiple dairy shows that happen annually at the Delaware County Fairgrounds.

To nominate an Iowa dairy leader for the Ralph Keeling Leadership Award, visit [iowadairy.org](http://iowadairy.org).

# AMPI Cheddar Named Among the Best in the U.S.

Associated Milk Producers Inc. (AMPI) added to an already impressive list of achievements for Co-op Crafted cheeses throughout 2023 and into 2024. Cheddar cheeses produced at AMPI plants tallied four first-place finishes and eight top-three awards at the U.S. dairy industry's most prestigious competitions. A Medium Cheddar crafted by cheesemakers at AMPI's Blair, Wis., plant was named best in class and the overall top-scoring Cheddar in the 2023 U.S. Championship Cheese Contest. In this year's World Championship Cheese Contest, an Aged Cheddar from the Blair, Wis., plant placed second and Best in the U.S. in its class. Ninety family farms in the Northwest Iowa area supply the co-op's Sanborn, Iowa plant, makers of the first-place shredded cheese blend in the U.S. contest last year.



“The dedication of our dairy farm families and cheesemakers — and all of the team members in between — ensures consistent championship-caliber cheese that we are proud to

deliver to our customers in the U.S. and around the globe,” said Mike Wolkow, AMPI senior vice president of operations.

AMPI is headquartered in New Ulm, Minn., and owned by dairy farm families from Wisconsin, Minnesota, Iowa, Nebraska, South Dakota and North Dakota. AMPI is the largest farmer-owned cheese cooperative in the U.S. The cooperative's cheese, butter and powdered dairy products are marketed to foodservice, retail and food ingredient customers. The co-op launched its Dinner Bell Creamery brand and accompanying Co-op Crafted promise in 2019, highlighting over 50 years of dairy farm families partnering with skilled dairy craftsmen to make great-tasting, award-winning products.

# Iowa Division of Midwest Dairy Awards Scholarships

Midwest Dairy announced 11 Iowa students will receive \$1,000 scholarships this fall to an accredited college or university of their choice. Applications were reviewed by a committee and recipients were chosen based on their involvement in the dairy industry, leadership, career plans and academic standing. *This year's recipients include:*

- **Owen Bentley of Castalia:** Studying dairy science with a minor in agriculture business at Northeast Iowa Community College.
- **Alia Domeyer of Delhi:** Studying marketing with a minor in finance at the University of Northern Iowa.
- **Louis Hamlett of Aurora:** Studying dairy science and agronomy at Iowa State University.
- **Olivia Hanson of La Porte City:** Studying agriculture and life sciences education – teaching certification with a minor in event management at Iowa State University.
- **Grace Hingtgen of Bellevue:** Studying agriculture education at Black Hawk East Community College.

- **Noah Richards of Fairbank:** Studying agriculture business at Hawkeye Community College.
- **Haley Ronnebaum of Earlville:** Studying dairy science at Iowa State University.
- **Troy Schmitt of Fort Atkinson:** Studying accounting at the University of Northern Iowa.
- **Sarah Vacura of Le Mars:** Studying animal science with a minor in agricultural communications at South Dakota State University.
- **Addison Wemark of Ridgeway:** Studying dairy science with a minor in agribusiness at the University of Wisconsin – Platteville.
- **Elizabeth Westra of Primghar:** Studying agriculture marketing with a minor in photography at Dordt University.

Two additional scholarships will be awarded to the Iowa Dairy Princess and alternate upon completion of their duties following the Iowa State Fair. These recipients are **Ashley Elsbernd of Calmar** and **Elizabeth Fossum of Waterville**.

## ISDA AWARDS SCHOLARSHIPS TO MEMBERS

Iowa State Dairy Association (ISDA) announced 11 Iowa students will receive \$500 scholarships this fall to an accredited college or university of their choice. Applications were reviewed by a committee and recipients were chosen based on their involvement in the dairy industry, leadership, career plans and academic standing. *This year's recipients include:*

- **Owen Bentley of Castalia:** Bentley will be studying dairy science with a minor in agriculture business at Northeast Iowa Community College.
- **Aidan Bower of Danbury:** Bower is studying biological systems engineering at Iowa State University.
- **Isabelle Brumm of Stacyville:** Brumm will be studying agriculture communications at Iowa State University.
- **Katherine Comley of Ryan:** Comley will be studying special education at Kirkwood Community College.
- **Grace Hingtgen of Bellevue:** Hingtgen will be studying agriculture education at Black Hawk East Community College.

# Congratulations!

- **Kale Miller of Waverly:** Miller will be studying business management at Upper Iowa University.
- **Madison Nunes of Sibley:** Nunes will be studying biology at Buena Vista University.
- **Troy Schmitt of Fort Atkinson:** Schmitt is studying accounting at the University of Northern Iowa.
- **Anna ten Hoeve of Waverly:** ten Hoeve is studying interior design at Iowa State University.
- **Sarah Vacura of Le Mars:** Vacura will be studying animal science with a minor in agricultural communications at South Dakota State University.
- **Bodee Volesky of Newhall:** Volesky will be studying diesel ag mechanics at Kirkwood Community College.

The ISDA scholarship fund is made possible through ISDA memberships.



# Top prices paid FOR YOUR CATTLE

**RILEY RUBLE**  
507-402-2510

**DAIRY BUSINESS DEVELOPMENT MANAGER**  
ALBERT LEA, MN  
Holstein Steers | Bulls  
Fed Cows | Lean Cows

**PAIGE NETZKE**  
507-829-7926

**LONG PRAIRIE BUYING STATION**  
LONG PRAIRIE, MN  
Holstein Steers | Bulls  
Fed Cows | Lean Cows

**COLIN LYDORFF**  
763-377-0034

**CATTLE BUYER**  
LONG PRAIRIE, MN  
Holstein Steers | Bulls  
Fed Cows | Lean Cows



## Your market for

- ..... DAIRY CROSS FATS
- ..... HOLSTEIN STEERS
- ..... LEAN COWS
- ..... FED COWS
- ..... BULLS



**AMERICAN  
FOODS GROUP**

[AmericanFoodsGroup.com](http://AmericanFoodsGroup.com)

**CONTRACTING AVAILABLE**

# Highly Pathogenic Avian Influenza A H5N1 Virus Found in U.S. Dairy Cattle

In February of this year, dairy producers and veterinarians in Texas, New Mexico, and Kansas reported a mysterious illness. The reports indicated a sudden decrease in dry feed intake and rumen motility, accompanied by a rapid decrease in milk production. The milk would become thicker and a little yellow, appearing similar to colostrum. Tacky or loose feces, lethargy, dehydration, and fever, were also frequently reported.

On March 25, USDA APHIS announced the detection of highly pathogenic avian influenza (HPAI) H5N1. There have now been confirmations of HPAI in dairy cattle in Texas, New Mexico, Kansas, Idaho, Michigan, Ohio, North Carolina, South Dakota, and Colorado. In addition, poultry premises in Kansas, Michigan, Minnesota, New Mexico, and Texas have been found to be infected with the same distinct H5N1 virus genotype detected in dairy cattle.

In order to address the risk, USDA announced a Federal Order on April 24. The Federal Order requires mandatory testing prior to interstate movement of lactating dairy cattle and mandatory reporting of positive influenza A test results in livestock. Lactating dairy cattle with no clinical signs can be shipped for slaughter without a premovement test but must have a certificate of veterinary inspection or other approved documents.

Lactating dairy cattle showing clinical signs of HPAI infection are not eligible for interstate movement or movement to slaughter. Producers should check with their veterinarian

## IOWA STATE UNIVERSITY Extension and Outreach

for any updates to animal movement guidelines prior to planning shipments.

The term “Highly Pathogenic” refers to the disease in poultry, not dairy cattle or humans. Very few deaths have been reported in dairy cattle and most affected animals tend to recover. The HP varieties of avian influenza virus are very pathogenic to poultry so dairy producers should not only step up biosecurity to

keep this virus out of their facilities but also to help keep it out of their neighbor’s poultry flocks.

While wild birds are considered to be the initial source of the outbreak, transmission between cattle has occurred and cattle appear to be the source of infection in some of the states. The virus is found most consistently in milk.

The FDA has shown that pasteurization kills this virus. Virus particles can still be found with sensitive PCR tests but egg inoculation demonstrate the virus has been killed.

For the latest information, visit <https://www.extension.iastate.edu/dairyteam/HPAI>.

### RAISING YOUR DAIRY BEST HEIFER



<https://go.iastate.edu/DAIRYBESTHEIFER>

**SUMMER WEBINAR SERIES**



**JUNE**

- 3 - Maternity Management**  
Dr. Howard Tyler  
Iowa State University
- 10 - Heifer Feeding Strategies**  
Dr. Gail Carpenter  
Iowa State University
- 24 - Colostrum Management**  
Dr. Phil Jardon  
College of Veterinary Medicine,  
Iowa State University  
Jennifer Bentley  
Iowa State University Extension and Outreach



**JULY**

- 8 - Managing Heifer Inventory**  
Greg Palas  
Dairy Records Management System  
Fred Hall  
Iowa State University Extension and Outreach
- 22 - Heifer Health**  
Dr. Phil Jardon  
College of Veterinary Medicine, Iowa State University
- 30 - Heifer Reproduction**  
Dr. Victor Gamez  
Kansas State University



**AUGUST**

- 5 - Heifer Benchmarking**  
Dr. Gail Carpenter  
Iowa State University
- 12 - Heifer Grower Panel**  
TBD
- 19 - Economics of Raising Heifers**  
Larry Tranel  
Iowa State University Extension and Outreach

**12:00 PM – 1:15 PM CST**

**IOWA STATE UNIVERSITY**  
Extension and Outreach

\*Funding for this project was provided by the North Central Extension Risk Management Education Center, the USDA National Institute of Food and Agriculture under Award Number 2022-70027-14694\*





101 NE Trilein Dr. • Ankeny, IA 50021

# 2024 Iowa State Dairy Association Membership Form

**PRODUCER MEMBERSHIP:  
Waived**

*Open to any individual actively dairy farming by producing milk or raising heifer replacements.*

**ASSOCIATE MEMBERSHIP:  
\$25/YEAR**

*Available to any individual not actively dairy farming but has interest in the Iowa dairy industry.*

**CORPORATE MEMBERSHIP OPPORTUNITIES**

*Please contact Mariah Busta at 563-449-2414 for information on ISDA's corporate memberships.*

Contact Name: \_\_\_\_\_

Farm or Business Name: \_\_\_\_\_

Address: \_\_\_\_\_

City: \_\_\_\_\_ State: \_\_\_\_\_ ZIP Code: \_\_\_\_\_

Phone: \_\_\_\_\_ Cell Phone: \_\_\_\_\_

County: \_\_\_\_\_ Email: \_\_\_\_\_

# of Cows: \_\_\_\_\_ Ship Milk To: \_\_\_\_\_

I wish to opt out of the ISDA Producer Membership. I understand that by checking this box I opt out and will lose the right to the benefits provided by the ISDA.



**You can also visit the ISDA website at [www.iowadairy.org](http://www.iowadairy.org) to fill out an online membership form.** Please make Associate Membership checks payable to the Iowa State Dairy Association. For 2024, the ISDA Producer Membership fee will be waived in recognition of the financial restraints in the agricultural industry in Iowa. In 2024, we will review reinstating membership fees for the 2025 calendar year.

While membership dues to the Iowa State Dairy Association are not tax deductible as charitable contributions for federal income tax purposes, a portion may be tax deductible as ordinary and necessary business expenses. However, the portion of membership dues that represent nondeductible lobbying activities of Iowa State Dairy Association is not tax deductible. The nondeductible portion of your dues is 30%. **Please return dues and membership form to: ISDA Accounting Office, 2015 Rice Street, St. Paul, MN 55113.**